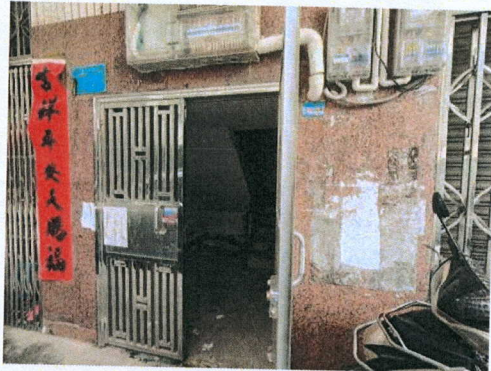


估价对象照片

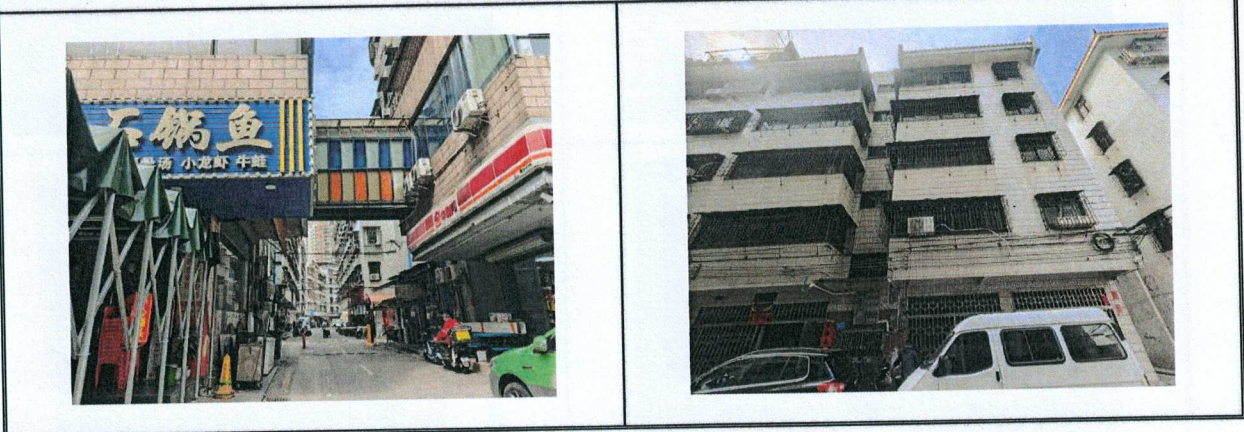
地址：惠州市河南岸斑樟湖龙泉街 E 栋 11#、12#第二层共 27 套房地产

估价对象 1：惠州市河南岸斑樟湖龙泉街 E 栋 11#、12#第二层

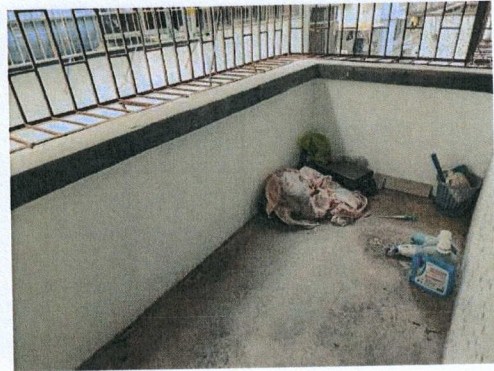
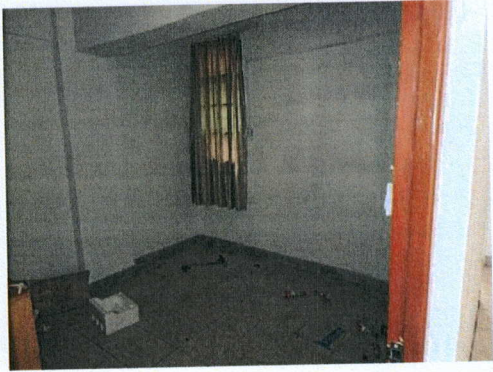




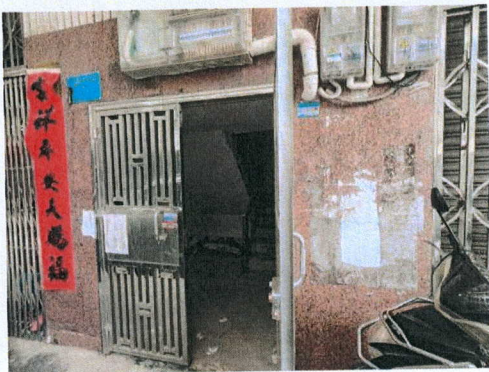
估价对象 2: 惠州市河南岸斑樟湖龙泉街 E 栋 11#、12# 第三层

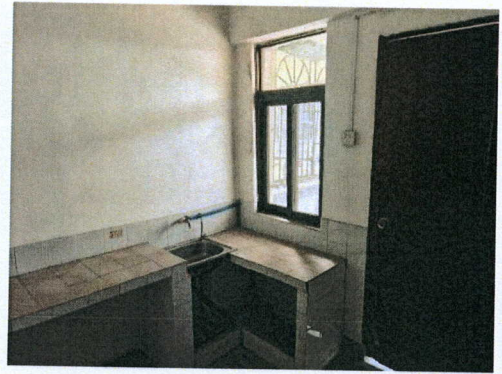
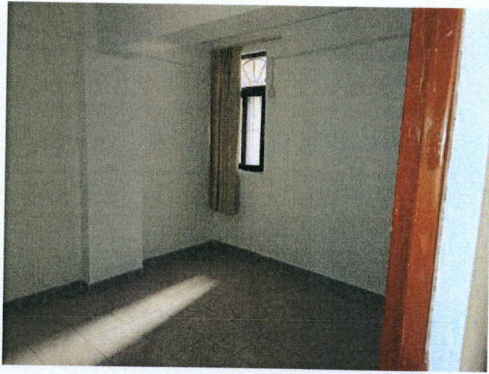
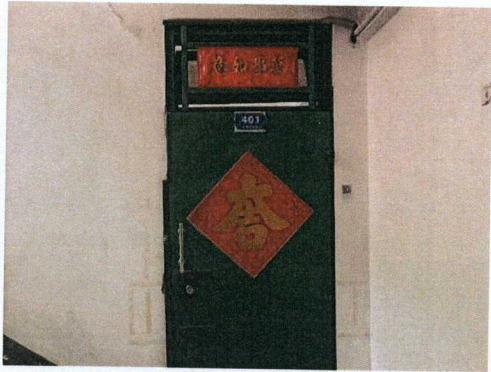


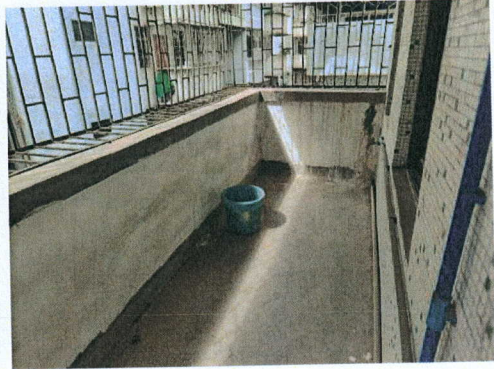




估价对象 3: 惠州市河南岸斑樟湖龙泉街 E 栋 11#、12#第四层

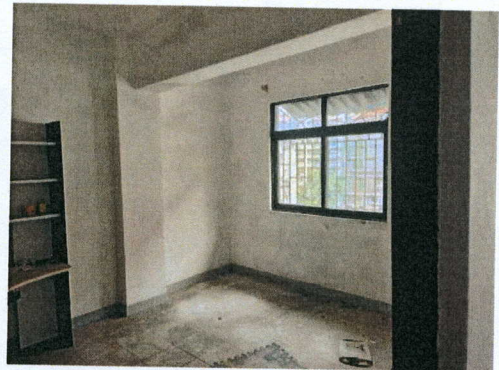
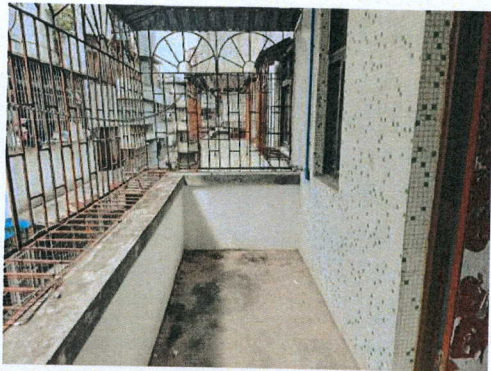


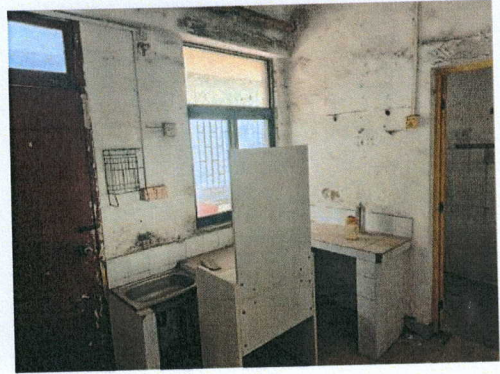
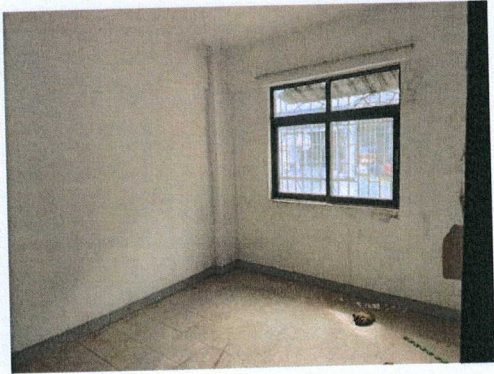




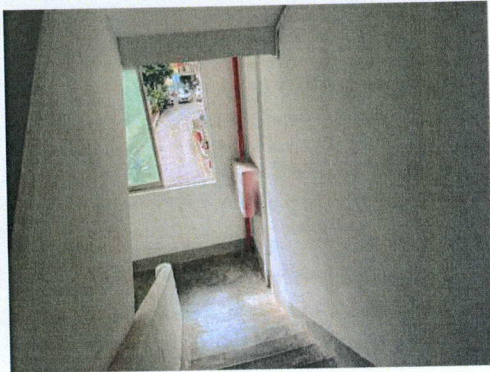
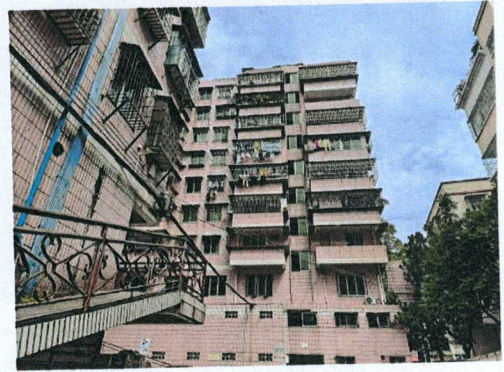
估价对象 4: 惠州市河南岸斑樟湖龙泉街 E 栋 11#、12#第五层

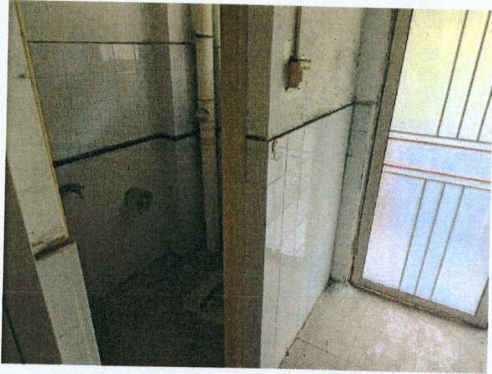
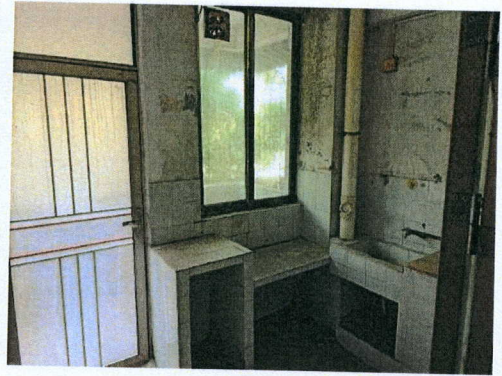




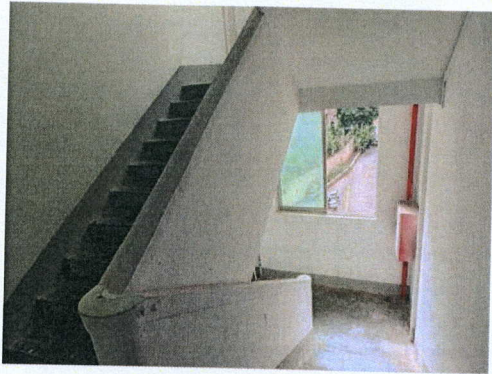


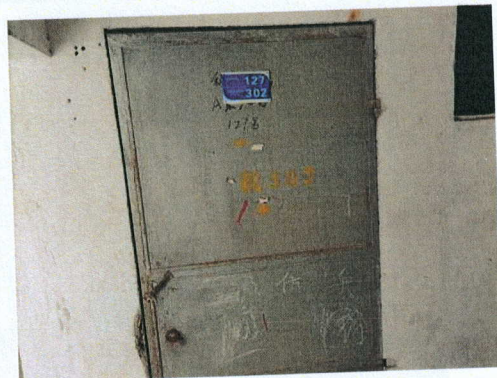
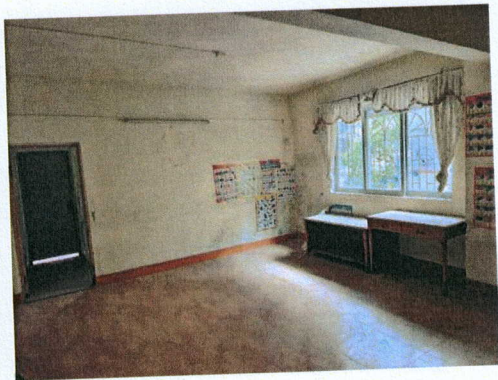
估价对象 5: 惠州市河南岸府前路正泰花园 A 栋东梯西 301 房





估价对象 6: 惠州市河南岸府前路正泰花园 A 栋东梯东 302 房





估价对象 7: 惠州市河南岸府前正泰花园 A 栋中梯东 402 房

